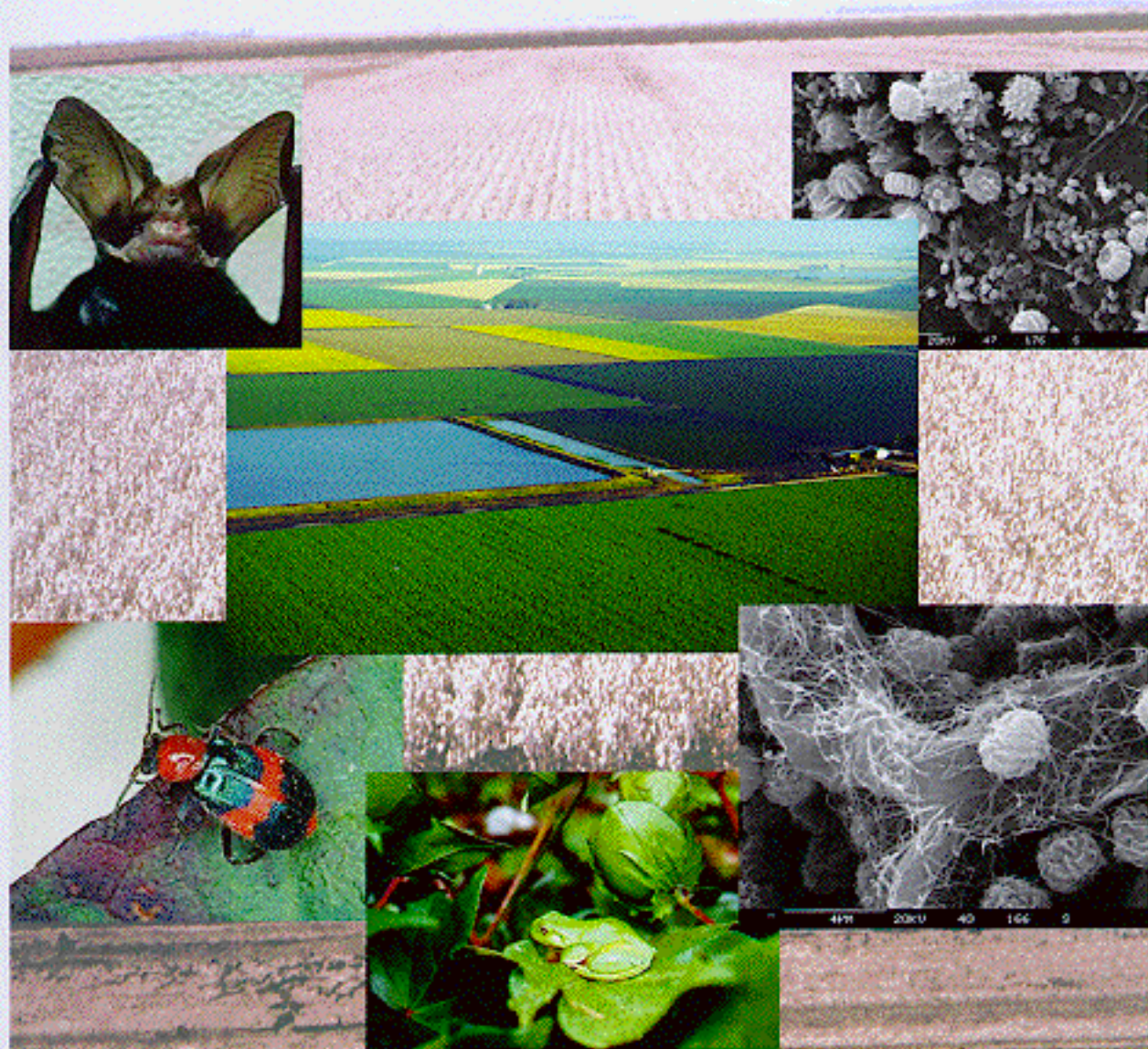


# A Review of Biodiversity Research in the Australian Cotton Industry

Final Report to the Cotton Research and  
Development Corporation  
December 2003



*Cotton*  
RESEARCH & DEVELOPMENT

**UNE**  
THE UNIVERSITY  
OF NEW ENGLAND

**Cotton**  
  
**CRC**



**A Review of Biodiversity Research in  
the Australian Cotton Industry**

**Final Report to the Cotton Research  
and Development Corporation  
October 2003**

**Nick Reid  
Gabrielle O'Shea  
Letitia Silberbauer**



## Acknowledgments

The authors thank:

1. The Cotton Research and Development Corporation for funding this project, and Guy Roth in particular for his valuable input.
2. Cate MacGregor, University of New England for mapping work.
3. The following people for their advice and help with requests for information

Dr Geoff Baker (Project Coordinator Cotton Pest Management, CSIRO), Dr Mike Bell (DPI Kingaroy), Di Bentley (Liverpool Plains Land Management Committee), A/Prof Andrew Boulton (Ecosystem Management, University of New England), Dr Margaret Brock (DIPNR, Armidale), Sara Broomhall (University of Sydney), Dr Peter Carberry (CSIRO Sustainable Ecosystems, Qld), Rod Cheetham (DPI Fisheries, Kingaroy), Dr Chris Chilcott (NR&M, Toowoomba), Evan Cleland (Farmer and Chairman of Australian Cotton CRC), Dr Matt Colloff (Entomology, CSIRO), Jack Cooper (NSW Agriculture, Trangie), Dr Angus Crossan (University of Sydney), Martin Dillon (CSIRO Entomology), A/Prof John Duggin (Ecosystem Management, UNE), Dr Leo Duivenvoorden (Centre for Land & Water Resources Management, Central Queensland University), Dr David Eldridge (DIPNR Sydney), Dr Teresa Eyre (Forest Condition and Habitat Monitoring Assessment, EPA Indooroopilly), Bronwyn Fisher (Border Rivers CMA, Qld), Alison Goodland (World Wildlife Fund, Toowoomba), Peter Grace (Greenhouse, Queensland), A/Prof Peter Gregg (Agronomy, UNE), Dr VSSR Gupta (Land and Water, CSIRO), Pam Harris (Condamine CMA, Qld), Dr Mark Howden (CSIRO Canberra), Dr Lesley Hughes (Macquarie University), Dr Nilantha Hulugalle (NSW Agriculture), John T Hunter, Dr Kim Jenkins (Ecosystem Management, University of New England), Nolene Kunst (EPA, Qld), Peter Lawrence (University of Queensland), Dr Frank Lemckert (State Forests of NSW), Nita Lennon (Shire of Dubbo), Dr Lisa Lobry de Bryun (Soils, UNE), Peter Long (Senior Fisheries Extension Officer, Qld), Siwan Lovett (L&WA, Canberra), Rob Lowe (Agronomist, Tandou Cotton), Prof Peter Jarman (Ecosystem Management, UNE), Leah MacKinnon (UNE), Jon Marshall (NR&M, Toowoomba), Dr Bob Martin (Tamworth Crop Improvement Centre), Dr Dave McFarland (Biodiversity Unit, EPA, Qld), Geoff McIntyre (Cotton Extension Officer, Dalby), Dr Neil McKilligan (University of Southern Queensland, Toowoomba), Janelle Montgomery (UNE), Monika Muschal (Water quality, DIPNR), Dr David Nehl (NSW Agriculture ACRI), Dr Jamie Nicholls (Centre for Pesticide Application and Safety, University of Queensland), Dr Ian Oliver (DIPNR Armidale), Julie O'Halloran (NSW Agriculture, Moree), Prof Hugh Possingham (Director, Conservation Biology, University of Queensland), Perry Poulton (CSIRO, Toowoomba), Sophie Powire (DIPNR, Dubbo), Julian Prior (Ecosystem Management, University of New England), Julian Reid (CSIRO Sustainable Ecosystems, Canberra), Ingrid Rencken (PhD candidate, UNE), Dr Michael Robertson (Agricultural Production Systems Research Unit, CSIRO Sustainable Ecosystems, Indooroopilly), Dr Darren Ryder (Ecosystem Management, UEN), Greg Salmond (DPI, Dalby), Nicki Seymour (Leslie Research Centre, DPI Toowoomba), Mark Silburn (Senior Hydrologist, NR&M, Toowoomba), Nicolette Thompson (Birds Australia Toowoomba), Dr John Triantafilis (University of Sydney), Rachel Topp (Dawson Catchment Coordinating Association, Theodore), Dr Willem Vervoort (University of Sydney), Bo Wang (CSIRO), Skye Wassens (Charles Sturt University), Graham Watson (DIPNR, Armidale), Doug Westhorpe (DIPNR, Armidale), Bill Wilkinson (NR&M, Qld), and Dr Glenn Wilson (Cooperative Research Centre for Freshwater Ecology, Goondiwindi).

Publication data: *A Review of Biodiversity Research in the Australian Cotton Industry*, Final Report to the Cotton Research and Development Corporation, October 2003, Project No. 6.2.26, Ecosystem Management, University of New England, Armidale.

Authors: Nick Reid, Gabrielle O'Shea and Letitia Silberbauer, Ecosystem Management, School of Environmental Sciences and Natural Resources Management, UNE, Armidale, NSW 2351. Printed: November 2003

Cover: Background: Cotton field in the Namoi Valley (Peter Gregg), Photos clockwise from top left: Lesser long-eared bat (*Nyctophilus geoffroyi*) captured over a cotton field in northern NSW (Dave Britton), Aerial view of the Darling Downs agricultural district including cotton fields (Peter Gregg), SEM picture of cotton stubble colonized by a diverse range of fungi spores (VSSR Gupta), SEM picture of cotton stubble colonized with fungi and actinomycete hyphae and spores (VSSR Gupta), Green tree frog (*Litoria caerulea*) on unsprayed cotton on the property of Ken and Lou Platt, near Pilliga, NSW (Martin Dillon), and the beneficial predatory red and blue beetle (*Dicranolaius belulus*) collected from a cotton field in northern NSW (Dave Britton).

## Table of Contents

<b><u>EXECUTIVE SUMMARY</u></b> .....	<b>1</b>
<b><u>1.0 INTRODUCTION</u></b> .....	<b>15</b>
<u>1.1 BRIEF AND SCOPE OF THE REPORT</u> .....	16
<u>1.2 REPORT FOCUS</u> .....	17
<u>1.3 REPORT STRUCTURE</u> .....	19
<b><u>2.0 BIODIVERSITY TERMINOLOGY, THE GLOBAL AND NATIONAL CONTEXT, AND BIODIVERSITY AND AGRICULTURE</u></b> .....	<b>21</b>
<u>2.1 BIODIVERSITY TERMINOLOGY</u> .....	21
<u>2.2 BIODIVERSITY – THE GLOBAL AND NATIONAL CONTEXT</u> .....	24
<u>2.2.1 Human Impacts on Biodiversity</u> .....	25
<u>2.3 BIODIVERSITY AND AGRICULTURE</u> .....	26
<u>2.3.1 Terrestrial biodiversity</u> .....	28
<u>2.3.2 Aquatic biodiversity</u> .....	30
<u>2.4 POSITIVE IMPACTS OF AGRICULTURE ON BIODIVERSITY</u> .....	33
<b><u>3.0 OVERVIEW OF BIODIVERSITY LEGISLATION AND GOVERNMENT POLICY RELEVANT TO COTTON PRODUCTION</u></b> .....	<b>37</b>
<u>3.1 INTRODUCTION</u> .....	37
<u>3.2 COMMONWEALTH GOVERNMENT</u> .....	37
<u>3.2.1 Legislation and regulations</u> .....	37
<u>3.2.2 Policies and strategies</u> .....	37
<u>3.3 NEW SOUTH WALES GOVERNMENT</u> .....	41
<u>3.3.1 Legislation and regulations</u> .....	41
<u>3.3.2 Policies and strategies</u> .....	43
<u>3.3.3 Statutory Resource Management Committees</u> .....	44
<u>3.4 QUEENSLAND GOVERNMENT</u> .....	45
<u>3.4.1 Legislation and regulations</u> .....	45
<u>3.4.2 Policies and strategies</u> .....	47
<u>3.4.3 Statutory resource management committees</u> .....	49
<u>3.5 LOCAL GOVERNMENT</u> .....	49
<u>3.6 MURRAY DARLING BASIN COMMISSION</u> .....	50
<u>3.7 INCENTIVE SCHEMES FOR BIODIVERSITY CONSERVATION</u> .....	52
<b><u>4.0 THE BIODIVERSITY, THREATENED SPECIES AND COMMUNITIES, AND KEY THREATENING PROCESSES IN COTTON GROWING REGIONS IN EASTERN AUSTRALIA</u></b> .....	<b>55</b>
<u>4.1 INTRODUCTION</u> .....	55
<u>4.2 ECOREGIONS AND COTTON GROWING</u> .....	56
<u>4.3 MAMMALS</u> .....	56
<u>4.3.1 New South Wales</u> .....	59
<u>4.3.2 Queensland</u> .....	59
<u>4.4 BIRDS</u> .....	61
<u>4.4.1 New South Wales</u> .....	61
<u>4.4.2 Queensland</u> .....	63
<u>4.5 REPTILES</u> .....	65
<u>4.5.1 New South Wales</u> .....	65
<u>4.5.2 Queensland</u> .....	66
<u>4.6 AMPHIBIANS</u> .....	67
<u>4.6.1 New South Wales</u> .....	70
<u>4.6.2 Queensland</u> .....	70
<u>4.7 FISH</u> .....	70
<u>4.7.1 New South Wales</u> .....	72
<u>4.7.2 Queensland</u> .....	72
<u>4.8 TERRESTRIAL INVERTEBRATES</u> .....	73
<u>4.9 AQUATIC INVERTEBRATES</u> .....	74

4.9.1	<a href="#">New South Wales</a> .....	75
4.9.2	<a href="#">Queensland</a> .....	75
4.10	<a href="#">MICROBES</a> .....	75
4.10.1	<a href="#">Soil microbes</a> .....	76
4.10.2	<a href="#">Aquatic microbes</a> .....	77
4.11	<a href="#">NATIVE VEGETATION</a> .....	79
4.11.1	<a href="#">Terrestrial vascular plants</a> .....	79
4.11.2	<a href="#">Terrestrial lower plants</a> .....	82
4.12	<a href="#">NATIVE AQUATIC VEGETATION</a> .....	83
4.13	<a href="#">EXOTIC VEGETATION: TERRESTRIAL AND AQUATIC WEEDS</a> .....	85
4.13.1	<a href="#">New South Wales</a> .....	85
4.13.2	<a href="#">Queensland</a> .....	86
4.13.3	<a href="#">Cotton farms</a> .....	86
4.14	<a href="#">THREATENED COMMUNITIES IN COTTON GROWING REGIONS</a> .....	87
4.15	<a href="#">THREATENING PROCESSES IN COTTON GROWING REGIONS</a> .....	89
4.16	<a href="#">THE BIODIVERSITY OF COTTON FIELDS</a> .....	92
<b>5.0</b>	<b><a href="#">LITERATURE REVIEW OF RESEARCH RELATING TO BIODIVERSITY AND ECOSYSTEM SERVICES IN COTTON GROWING REGIONS</a></b> .....	<b>99</b>
5.1	<a href="#">INTRODUCTION</a> .....	99
5.2	<a href="#">ROLE OF ECOSYSTEM SERVICES IN COTTON PRODUCTION SYSTEMS</a> .....	100
5.3	<a href="#">BIODIVERSITY AND ECOSYSTEM SERVICES IMPORTANT TO COTTON PRODUCTION</a> .....	103
5.3.1	<a href="#">Natural pest control</a> .....	103
5.3.2	<a href="#">Maintenance of soil health</a> .....	114
5.3.3	<a href="#">Prevention of soil erosion</a> .....	118
5.3.4	<a href="#">Water filtration</a> .....	129
5.3.5	<a href="#">Waste absorption and breakdown</a> .....	134
5.3.6	<a href="#">Maintenance of river flows</a> .....	140
5.3.7	<a href="#">Maintenance of groundwater levels and groundwater quality</a> .....	147
5.3.8	<a href="#">Maintenance and regeneration of habitat</a> .....	153
5.3.9	<a href="#">Maintenance and provision of genetic resources</a> .....	159
5.3.10	<a href="#">Regulation of climate</a> .....	161
5.3.11	<a href="#">Provision of shade, shelter and barrier effect</a> .....	165
5.4	<a href="#">THE IMPORTANCE OF BIODIVERSITY TO COTTON PRODUCTION</a> .....	167
<b>6.0</b>	<b><a href="#">CONCLUSIONS</a></b> .....	<b>173</b>
6.1	<a href="#">WHY THE COTTON INDUSTRY NEEDS TO KNOW ABOUT BIODIVERSITY</a> .....	173
6.1.1	<a href="#">The importance of biodiversity to sustaining cotton production</a> .....	173
6.1.2	<a href="#">Mounting social and regulatory pressure</a> .....	174
6.2	<a href="#">PRACTICAL OPPORTUNITIES</a> .....	174
6.2.1	<a href="#">Farmers as land stewards</a> .....	175
6.2.2	<a href="#">Stewardship opportunities for cotton growers</a> .....	176
6.3	<a href="#">GAPS AND OPPORTUNITIES FOR FUTURE RESEARCH</a> .....	180
6.3.1	<a href="#">Biodiversity research to benefit grower profits and the environment</a> .....	180
6.3.2	<a href="#">Biodiversity research to clarify the industry's environmental duty of care</a> .....	182
6.3.3	<a href="#">Research to characterise the biodiversity of cotton areas</a> .....	183
	<b><a href="#">REFERENCES</a></b> .....	<b>185</b>
	<b><a href="#">APPENDICES</a></b> .....	<b>207</b>

## List of Tables

<a href="#">TABLE 2.1.</a>	<a href="#">DEFINITION OF KEY BIODIVERSITY TERMS USED IN THIS REPORT</a>	22
<a href="#">TABLE 3.1.</a>	<a href="#">THE STATUS OF REGIONAL VEGETATION MANAGEMENT PLANS IN NSW</a>	42
<a href="#">TABLE 3.2.</a>	<a href="#">FIVE PRINCIPLES FOR MANAGEMENT OF GROUNDWATER DEPENDENT ECOSYSTEMS IN NSW (DLWC 2002B).</a>	44
<a href="#">TABLE 3.3.</a>	<a href="#">REGIONAL VEGETATION MANAGEMENT PLAN PLANNING GROUPS, QUEENSLAND</a>	47
<a href="#">TABLE 3.4.</a>	<a href="#">MDBC TIMETABLE FOR SETTING CATCHMENT MANAGEMENT TARGETS (MDBC 2001).</a>	51
<a href="#">TABLE 4.1.</a>	<a href="#">MAIN COTTON GROWING AREAS IN EASTERN AUSTRALIA AND THE IBRA ECOREGIONS IN WHICH THEY OCCUR (ANON. 2002; THACKWAY &amp; CRESSWELL 1995). COTTON ACREAGES WERE DOWN BY 50% OF MAXIMUM PLANTED AREA IN SOME OF THE MAIN COTTON GROWING AREAS IN THE DARLING RIVERINE PLAINS, BRIGALOW BELT SOUTH AND BRIGALOW BELT NORTH IN 2001/02 DUE TO LOW PRICES.</a>	57
<a href="#">TABLE 4.2.</a>	<a href="#">MAMMAL SURVEYS AND OTHER RESEARCH UNDERTAKEN IN COTTON GROWING AREAS OF NSW AND QUEENSLAND</a>	60
<a href="#">TABLE 4.3.</a>	<a href="#">BIRD SURVEYS AND OTHER RESEARCH UNDERTAKEN IN COTTON GROWING AREAS OF NSW AND QUEENSLAND.</a>	64
<a href="#">TABLE 4.4.</a>	<a href="#">REPTILE SURVEYS AND OTHER RESEARCH UNDERTAKEN IN COTTON GROWING AREAS OF NSW AND QUEENSLAND.</a>	67
<a href="#">TABLE 4.5.</a>	<a href="#">CURRENT AUSTRALIAN RESEARCH INTO THE IMPACTS OF AGRICULTURAL CHEMICALS ON FROGS (SOURCE: MANN AND BIDWELL 1999)</a>	69
<a href="#">TABLE 4.6.</a>	<a href="#">AMPHIBIAN SURVEYS AND OTHER RESEARCH UNDERTAKEN IN COTTON GROWING AREAS OF NSW AND QUEENSLAND.</a>	71
<a href="#">TABLE 4.7.</a>	<a href="#">KEY THREATS TO NATIVE FISH MANAGEMENT IN THE MURRAY-DARLING BASIN (MDBMC 2002).</a>	71
<a href="#">TABLE 4.8.</a>	<a href="#">FISH SURVEYS AND OTHER RESEARCH UNDERTAKEN IN COTTON GROWING AREAS OF NSW AND QUEENSLAND.</a>	73
<a href="#">TABLE 4.9.</a>	<a href="#">AQUATIC INVERTEBRATE SURVEYS AND OTHER RESEARCH UNDERTAKEN IN COTTON GROWING AREAS OF NSW AND QUEENSLAND.</a>	76
<a href="#">TABLE 4.10.</a>	<a href="#">AQUATIC MICROBE RESEARCH RELEVANT TO COTTON GROWING AREAS OF NSW AND QUEENSLAND</a>	78
<a href="#">TABLE 4.11.</a>	<a href="#">MAJOR VASCULAR PLANT SURVEYS AND OTHER RESEARCH UNDERTAKEN IN COTTON GROWING AREAS OF NSW AND QUEENSLAND</a>	82
<a href="#">TABLE 4.12.</a>	<a href="#">NATIVE AQUATIC VEGETATION SURVEYS AND OTHER RESEARCH UNDERTAKEN IN COTTON GROWING AREAS OF NSW AND QUEENSLAND.</a>	84
<a href="#">TABLE 4.13.</a>	<a href="#">RESEARCH INTO TERRESTRIAL AND AQUATIC EXOTIC SPECIES IN COTTON GROWING AREAS</a>	87
<a href="#">TABLE 4.14.</a>	<a href="#">EXAMPLES OF RESEARCH INTO THREATENED COMMUNITIES IN COTTON GROWING AREAS</a>	88
<a href="#">TABLE 4.15.</a>	<a href="#">KEY RESEARCH PROJECTS INTO THE EFFECTS OF VEGETATION CLEARANCE AND LANDSCAPE CHANGE IN COTTON GROWING AREAS</a>	91
<a href="#">TABLE 4.16.</a>	<a href="#">INSECTIVOROUS BAT SPECIES DETECTED BY ANABAT ULTRASOUND RECORDER AROUND COTTON FIELDS NEAR NARRABRI IN THE LOWER NAMOI VALLEY IN THE 1999-2000 AND 2000-01 COTTON SEASONS (L. MACKINNON, PERS. COMM. 2003).</a>	93
<a href="#">TABLE 4.17.</a>	<a href="#">BIOMASS OF MAJOR TAXA IN UNSPRAYED FURROW-IRRIGATED COTTON IN MID SUMMER (VARIOUS SOURCES), COMPARED TO A TEMPERATE PASTURE (AFTER PIMENTEL, ET. AL. 1992).</a>	97
<a href="#">TABLE 5.1.</a>	<a href="#">GLOBAL ECOSYSTEM SERVICES, FUNCTIONS AND ANNUAL AVERAGE GLOBAL VALUE OF EACH SERVICE (COSTANZA ET AL. 1997).</a>	101
<a href="#">TABLE 5.2.</a>	<a href="#">THE 11 ECOSYSTEM SERVICES MOST RELEVANT TO COTTON PRODUCTION IN EASTERN AUSTRALIA, EITHER AS INPUTS UNDERPINNING PRODUCTION OR AFFECTED BY COTTON PRODUCTION.</a>	104
<a href="#">TABLE 5.3.</a>	<a href="#">THE ON-FARM AND OFF-FARM BIODIVERSITY THAT UNDERPINS THE ECOSYSTEM SERVICES THAT ARE INPUTS TO IRRIGATED COTTON PRODUCTION IN EASTERN AUSTRALIA.</a>	106
<a href="#">TABLE 5.4.</a>	<a href="#">ECOSYSTEM SERVICES THAT ARE AFFECTED (EITHER +, POSITIVELY OR -, NEGATIVELY) BY GROWING COTTON AND ARE THEREFORE OUTPUTS OF PRODUCTION IN EASTERN AUSTRALIA.</a>	109
<a href="#">TABLE 5.5.</a>	<a href="#">RESEARCH INTO NATURAL PEST CONTROL IN COTTON GROWING AREAS.</a>	115
<a href="#">TABLE 5.6.</a>	<a href="#">RESEARCH INTO SOIL HEALTH IN COTTON GROWING AREAS.</a>	119
<a href="#">TABLE 5.7.</a>	<a href="#">RESEARCH INTO THE PREVENTION OF SOIL EROSION IN COTTON GROWING AREAS.</a>	127
<a href="#">TABLE 5.8.</a>	<a href="#">RESEARCH INTO WATER FILTRATION IN COTTON GROWING AREAS.</a>	131
<a href="#">TABLE 5.9.</a>	<a href="#">RESEARCH INTO WASTE ABSORPTION AND BREAKDOWN IN COTTON GROWING AREAS.</a>	136
<a href="#">TABLE 5.10.</a>	<a href="#">RIVER AND WETLAND FLOW INFORMATION FOR DIFFERENT CATCHMENTS IN COTTON GROWING AREAS.</a>	143

<a href="#"><u>TABLE 5.11.</u></a>	<a href="#"><u>INFORMATION ON THE SPECIFIC RIVER FLOW REQUIREMENTS OF FLORA AND FAUNA SPECIES</u></a> .....	146
<a href="#"><u>TABLE 5.12.</u></a>	<a href="#"><u>RESEARCH INTO THE MAINTENANCE OF GROUNDWATER LEVELS AND GROUNDWATER QUALITY IN COTTON GROWING AREAS.</u></a> .....	150
<a href="#"><u>TABLE 5.13.</u></a>	<a href="#"><u>RESEARCH INTO THE MAINTENANCE AND REGENERATION OF HABITAT IN COTTON GROWING AREAS.</u></a> .....	156
<a href="#"><u>TABLE 5.14.</u></a>	<a href="#"><u>RESEARCH INTO THE MAINTENANCE AND PROVISION OF GENETIC RESOURCES IN COTTON GROWING AREAS.</u></a> .....	160
<a href="#"><u>TABLE 5.15.</u></a>	<a href="#"><u>RESEARCH INTO THE REGULATION OF CLIMATE IN COTTON GROWING AREAS.</u></a> .....	164
<a href="#"><u>TABLE 5.16.</u></a>	<a href="#"><u>RESEARCH INTO THE PROVISION OF SHADE, SHELTER AND BARRIER EFFECTS IN COTTON GROWING AREAS.</u></a> .....	168

## List of Figures

<a href="#"><u>FIG. 1.1.</u></a>	<a href="#"><u>THE THREE MAJOR CYCLES THAT LINK ECOSYSTEM SERVICES, GOODS AND NATURAL ASSETS: (1) THE PRODUCTION CYCLE WHEREBY 'GOODS' AND OTHER PRODUCTS ARE PRODUCED FROM NATURAL ASSETS BY ECOSYSTEM SERVICES; (2) THE BREAKDOWN CYCLE WHERE WASTE PRODUCTS ARISING FROM THE PRODUCTION OF GOODS ARE RETURNED TO THE NATURAL RESOURCE BASE; AND (3) THE REGENERATIVE CYCLE OF ECOSYSTEM SERVICES THAT MAINTAIN NATURAL ASSETS (BINNING ET AL. 2001).</u></a> .....	18
<a href="#"><u>FIG. 4.1.</u></a>	<a href="#"><u>BOUNDARIES OF THE MAIN AREAS WITHIN WHICH COTTON IS GROWN IN EASTERN AUSTRALIA, AND THE IBRA ECOREGIONS (ANON. 2002C).</u></a> .....	58